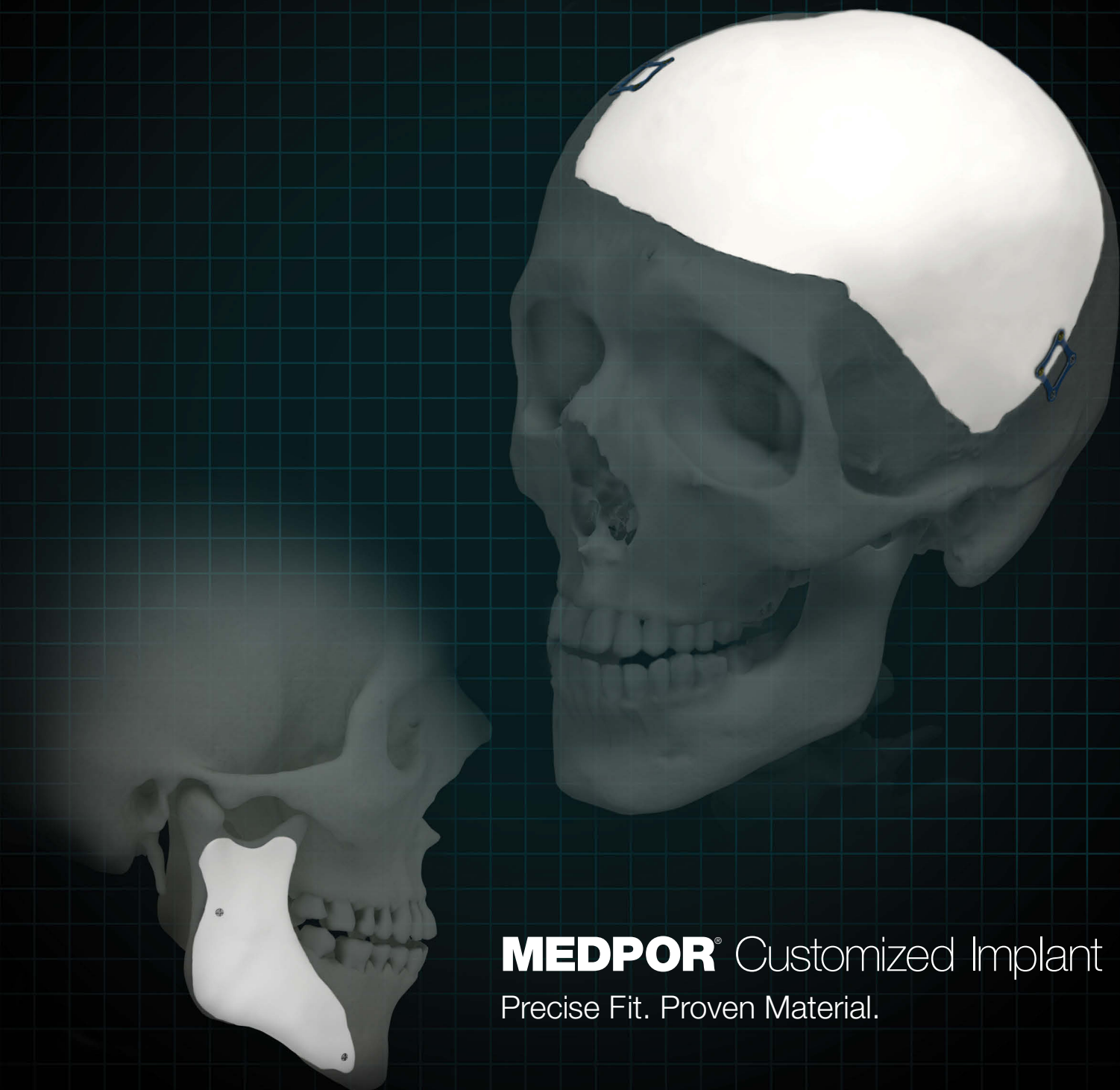


stryker®

Craniomaxillofacial

Stryker*iD*™

Individually Designed. Customized Care.



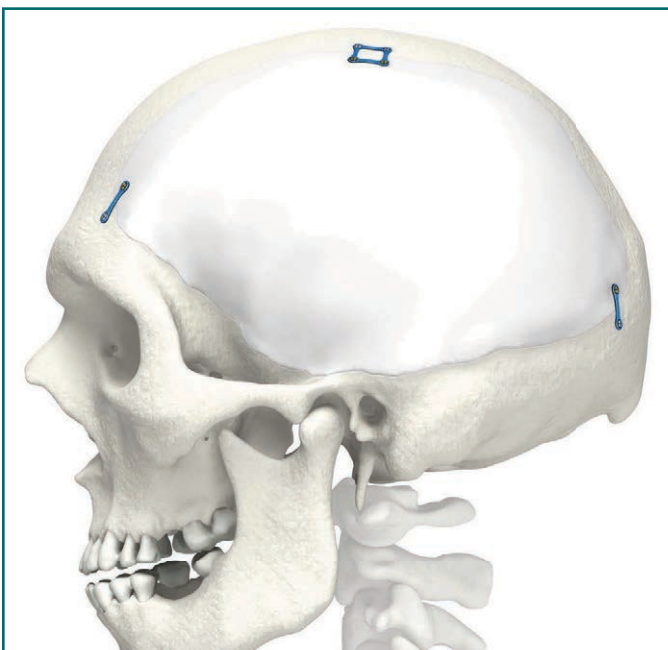
MEDPOR® Customized Implant
Precise Fit. Proven Material.

Stryker CMF MEDPOR Customized Implants are designed individually for each patient to correct trauma and/or defects in the maxillofacial or craniofacial bone.

MEDPOR is a biocompatible, porous polyethylene material. The interconnecting, omni-directional pore structure may allow for fibrovascular in-growth and integration of the patient's tissue.

Product Highlights

Modification	MEDPOR Customized Implants may be contoured with a scalpel blade away from the surgical field (care should be taken to ensure residue is removed from the implant and that the surgical field is free of debris)
Fixation	MEDPOR Customized Implants may be fixated with Stryker 1.2mm, 1.5mm, or 1.7mm self-drilling screws 4mm in length or greater; screws can be inserted directly into the flange, or for an inlay case, screws and plates can be used
Sterile	Each MEDPOR Customized Implant kit contains two (2) identical sterile implants and one (1) sterile Host Bone model (defect area), limiting processing risks for the hospital
Electronic Approval Process	Online Web Application allows for electronic design approval prior to manufacturing (optional)
Precise Fit	Designed and manufactured to the surgeon's preference, with inlay and flange options available
Onlay/Augmentation Applications	MEDPOR Customized Implants are indicated for onlay/augmentation applications in cranial, midface, and mandible bone
Tissue In-Growth	The interconnecting, omni-directional pore structure of MEDPOR may allow for fibrovascular in-growth and integration of the patient's tissue



One-Piece Cranial Implant
(Two-Piece and Onlay Designs Also Available)



Full Zygomatic Reconstruction

Ordering Process

- 1.** Fill out the Customer Order Form completely.
- 2.** During the scan acquisition process, closely follow the CT Scanning Protocol and be sure to use a supported scanner model and media type.

*Note: Our design software is validated for precise fit based on the CT scanning protocol. Scans must be within protocol for an implant to be designed and manufactured.
- 3.** Submit the form and CT data via:

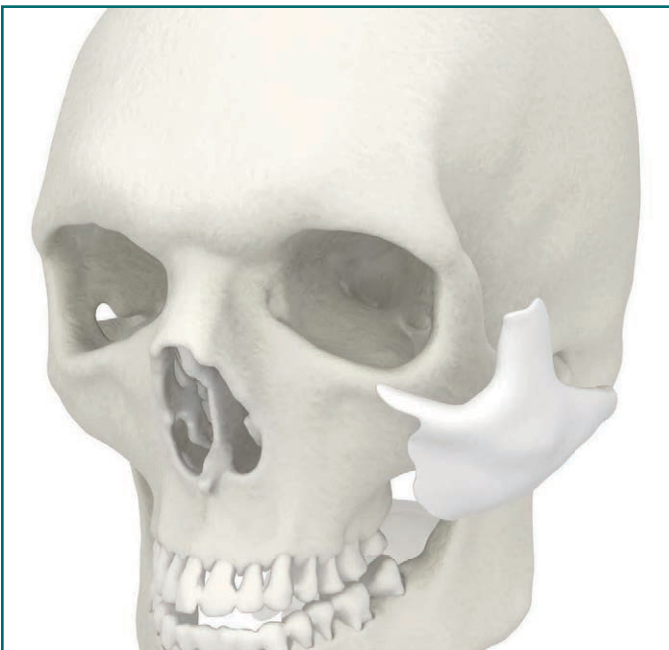
Fax: (855) 256-2860

Email: CMFCustomizedImplants@stryker.com

Mail: Attn: CMF Customized Implants
Stryker Orthopaedics
325 Corporate Drive
Mahwah, NJ 07430
- 4.** For online ordering instructions, including electronic upload of CT data; please contact your local Stryker sales representative.
- 5.** Once we have received the CT data, a customized implant will be designed and a graphic rendering will be emailed for approval before manufacturing begins.

Ordering Information

5444-0-110 **MEDPOR Customized Cranial Implant Kit, Small**
5444-0-210 **MEDPOR Customized Cranial Implant Kit, Medium**
5444-0-310 **MEDPOR Customized Cranial Implant Kit, Large**
5444-0-410 **MEDPOR Customized Cranial Implant Kit, Extra Large**
5444-0-510 **MEDPOR Customized Midface Implant Kit**
5444-0-610 **MEDPOR Customized Augmentation Implant Kit**



Midface Augmentation



Mandible Augmentation
(Chin Augmentation Also Available)

Reconstructive

Hips
Knees
Trauma & Extremities
Foot & Ankle
Joint Preservation
Orthobiologics & Biosurgery

MedSurg

Power Tools & Surgical Accessories
Computer Assisted Surgery
Endoscopic Surgical Solutions
Integrated Communications
Beds, Stretchers & EMS
Reprocessing & Remanufacturing

Neurotechnology & Spine

Craniomaxillofacial
Interventional Spine
Neurosurgical, Spine & ENT
Neurovascular
Spinal Implants

A surgeon must always rely on his or her own professional clinical judgment when deciding whether to use a particular product when treating a particular patient. Stryker does not dispense medical advice and recommends that surgeons be trained in the use of any particular product before using it in surgery. The information presented is intended to demonstrate the breadth of Stryker product offerings. A surgeon must always refer to the package insert, product label and/or instructions for use before using any Stryker product. Products may not be available in all markets because product availability is subject to the regulatory and/or medical practices in individual markets. Please contact your Stryker representative if you have questions about the availability of Stryker products in your area.

Stryker Corporation or its divisions or other corporate affiliated entities own, use or have applied for the following trademarks or service marks: MEDPOR, Stryker ID, Stryker, and Stryker Orthopaedics. All other trademarks are trademarks of their respective owners or holders.

Literature Number: 9410-400-381 Rev. C
DDM/PS 1k 4/15

Copyright © 2015 Stryker
Printed in USA

Manufactured by:
Stryker Leibinger GmbH & Co. KG
Bötzingen Straße 41
D-79111 Freiburg, Germany
t: +49 (0) 761 4512-0
f: +49 (0) 761 4512-120

Distributed by:
Stryker Craniomaxillofacial
Kalamazoo, MI 49002 USA
t: 269 389 5346
toll free: 800 962 6558
f: 877 648 7114

www.stryker.com