

2.0 2.3 Orthognathic

2.0MM BONE SCREWS, GOLD

(Order Qty: Pkg of 5)

Product No.	Description	Qty	Par Level
50-20404	2.0x4mm		
50-20405	2.0x5mm		
50-20406	2.0x6mm		
50-20408	2.0x8mm		
50-20410	2.0x10mm		
50-20412	2.0x12mm		
50-20414	2.0x14mm		
50-20416	2.0x16mm		
50-20418	2.0x18mm		
50-20420	2.0x20mm		

2.0MM LOCKING SCREWS, GREY

(Order Qty: Pkg of 5)

Product No.	Description	Qty	Par Level
50-20504	2.0x4mm		
50-20505	2.0x5mm		
50-20506	2.0x6mm		
50-20508	2.0x8mm		
50-20510	2.0x10mm		
50-20512	2.0x12mm		
50-20514	2.0x14mm		
50-20516	2.0x16mm		
50-20518	2.0x18mm		
50-20520	2.0x20mm		

2.3MM BONE SCREWS, GOLD

(Order Qty: Pkg of 5)

Product No.	Description	Qty	Par Level
50-23404	2.3x4mm		
50-23406	2.3x6mm		
50-23408	2.3x8mm		
50-23410	2.3x10mm		
50-23412	2.3x12mm		
50-23414	2.3x14mm		
50-23416	2.3x16mm		
50-23418	2.3x18mm		
50-23420	2.3x20mm		

2.3MM LOCKING SCREWS, GREY

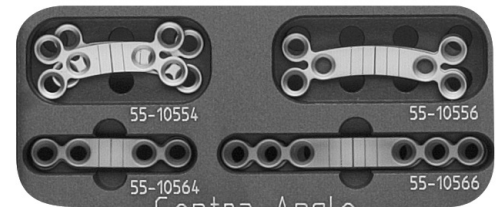
(Order Qty: Pkg of 5)

Product No.	Description	Qty	Par Level
50-23504	2.3x4mm		
50-23506	2.3x6mm		
50-23508	2.3x8mm		
50-23510	2.3x10mm		
50-23512	2.3x12mm		
50-23514	2.3x14mm		
50-23516	2.3x16mm		
50-23518	2.3x18mm		
50-23520	2.3x20mm		

2.0/2.3MM ORTHOGNATHIC PLATES

(Order Qty: Pkg of 1)

Product No.	Description	Qty	Par Level
55-10554	6 Hole Curved Mandible Osteotomy Plate, 6mm Bar, locking		
55-10556	6 Hole Curved Mandible Osteotomy Plate, 12mm Bar, locking		
55-10564	4 Hole Straight Mandible Osteotomy Plate, 6mm Bar, locking		
55-10566	6 Hole Straight Mandible Osteotomy Plate, 12mm Bar, locking		
55-10570	Sliding Mandible Osteotomy Plate, malleable		
55-10580	Sliding Mandible Osteotomy Plate, locking		



Mandible Osteotomy Plates

(PLATES NOT
ACTUAL SIZE)

TWIST DRILLS FOR 2.0/2.3MM SCREWS

(Single use only) (Order Qty: Pkg of 1)

Product No.	Description	Qty	Par Level
60-16007	1.6x50mm, 7mm working length, Stryker End		
60-16035	1.6x115mm, 35mm working length, Stryker End		
60-19035	1.9x115mm, 35mm working length, Stryker End		
60-16535	1.6x85mm, 35mm working length, Stryker End		
60-19535	1.9x85mm, 35mm working length, Stryker End		
60-16820	1.6x102mm Color Striped Drill, 20mm working length, Stryker End		
60-19820	1.9x102mm Color Striped Drill, 20mm working length, Stryker End		



60-16820 1.6x102mm Color Striped Drill, 20mm working length, Stryker End



60-19820 1.9x102mm Color Striped Drill, 20mm working length, Stryker End

LUHR FRITZEMEIER DRILLS & BLADE FOR 2.0/2.3MM SCREWS

(Drills single use only) (Order Qty: Pkg of 1)

Product No.	Description	Qty	Par Level
60-16908	1.6x19mm, 8mm working length, 90°, Dental End		
60-16918	1.6x29mm, 18mm working length, 90°, Dental End		
60-19908	1.9x19mm, 8mm working length, 90°, Dental End		
60-19918	1.9x29mm, 18mm working length, 90°, Dental End		
62-92023	2.0/2.3mm Screwdriver Blade, 90°		

ORTHOGNATHIC INSTRUMENTS

Product No.	Description	Qty	Par Level
62-12170	1.7 Screwdriver Blade		
62-20130	2.0/2.3 Screwdriver Blade		
62-20285	Screwdriver Handle, Metal		
62-20295	Screwdriver Handle, Rigid/Revolving		
62-20290	Screwdriver Handle, Ratcheting		

INVENTORY CONTROL



Patient Information:

Stryker Craniomaxillofacial
 Kalamazoo, MI 49002 USA
t: 269 324 5346
 toll free: 800 962 6558
 f: 877 648 7114

Hospital: _____

Surgeon: _____

Date: _____

Purchase Order No.: _____

Sales Representative: _____

1.7 Orthognathic

1.7MM SELF-TAPPING SCREWS, GOLD

(Order Qty: Pkg of 5)

Product No.	Description	Qty	Par Level
50-17003	1.7x3mm		
50-17004	1.7x4mm		
50-17005	1.7x5mm		
50-17006	1.7x6mm		
50-17008	1.7x8mm		
50-17010	1.7x10mm		
50-17012	1.7x12mm		

TWIST DRILLS FOR 1.7MM SCREWS

(Single use only) (Order Qty: Pkg of 1)

Product No.	Description	Qty	Par Level
60-13505	1.35 x 50mm, 5mm Working Length, Stryker End		
60-13506	1.35 x 50mm, 6mm Working Length, Stryker End		
60-14008	1.4 x 54mm, 8mm Working Length, Stryker End		
60-13512	1.4 x 54mm, 12mm Working Length, Stryker End		
60-13570	1.3 x 79mm, 12mm Working Length, Stryker End		

1.7MM SELF-DRILLING SCREWS, SILVER

(Order Qty: Pkg of 5)

Product No.	Description	Qty	Par Level
50-17903	1.7x3mm		
50-17904	1.7x4mm		
50-17905	1.7x5mm		
50-17906	1.7x6mm		

COLORADO MICRODISSECTION NEEDLE

(Single use only) (Order Qty: Pkg of 1)

Product No.	Description	Qty
N103A	3cm Length, Straight	
N104A	4cm Length, Straight	
N117	45° Angle	
E1034	4" Straight Sleeve, 1cm Needle	
E1174	4" Straight Sleeve, 1cm Needle, 45° Angle	
Other		

1.9MM EMERGENCY SCREWS, PURPLE

(Order Qty: Pkg of 5)

Product No.	Description	Qty	Par Level
50-19003	1.9x3mm		
50-19005	1.9x5mm		
50-19007	1.9x7mm (Optional)		
50-19009	1.9x9mm (Optional)		

OPTIONAL ITEMS

Product No.	Description	Qty	Par Level

1.7MM LOCKING SCREWS, GREY

(Order Qty: Pkg of 5)

Product No.	Description	Qty	Par Level
50-17504	1.7x4mm		
50-17505	1.7x5mm		
50-17506	1.7x6mm		

1.7MM SCREW DISC

Product No.	Description	Qty	Par Level
29-17345	Screw Disc for 1.7mm self-tapping or self-drilling screws (Optional)		

1.7 Orthognathic

1.7MM ORTHOGNATHIC SYSTEM INLAY

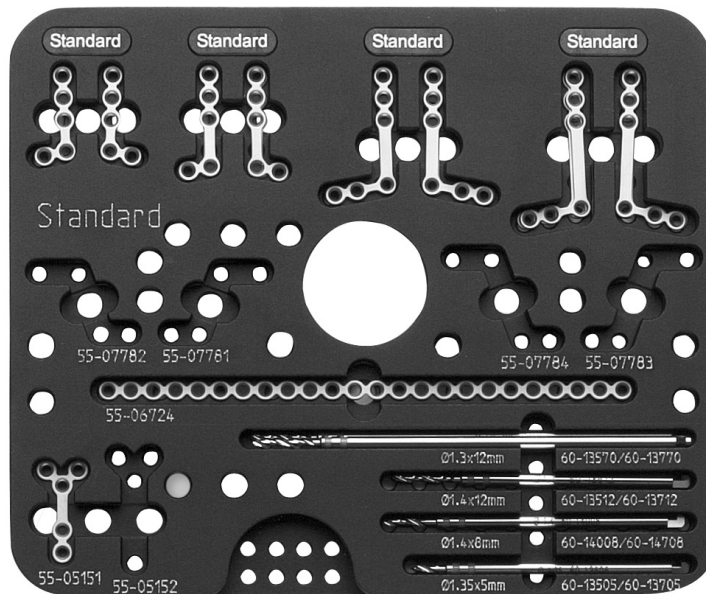
(Order Qty: Pkg of 1)

Product No.	Description	Qty	Par Level
1.7mm Standard L Plates, Gold			
55-06760	2mm Bar, 100° Left, 5 Hole		
55-06761	2mm Bar, 100° Right, 5 Hole		
55-06762	5mm Bar, 100° Left, 5 Hole		
55-06763	5mm Bar, 100° Right, 5 Hole		
55-06764	8mm Bar, 100° Left, 6 Hole		
55-06765	8mm Bar, 100° Right, 6 Hole		
55-06766	12mm Bar, 100° Left, 6 Hole		
55-06767	12mm Bar, 100° Right, 6 Hole		
1.7mm GSP L Plates, Gold			
55-07760	2mm Bar, 100° Left, 5 Hole		
55-07761	2mm Bar, 100° Right, 5 Hole		
55-07762	5mm Bar, 100° Left, 5 Hole		
55-07763	5mm Bar, 100° Right, 5 Hole		
55-07764	8mm Bar, 100° Left, 6 Hole		
55-07765	8mm Bar, 100° Right, 6 Hole		
55-07766	12mm Bar, 100° Left, 6 Hole		
55-07767	12mm Bar, 100° Right, 6 Hole		
1.7mm Malleable L Plates, Blue			
55-04760	2mm Bar, 100° Left, 5 Hole		
55-04761	2mm Bar, 100° Right, 5 Hole		
55-04762	5mm Bar, 100° Left, 5 Hole		
55-04763	5mm Bar, 100° Right, 5 Hole		
55-04764	8mm Bar, 100° Left, 6 Hole		
55-04765	8mm Bar, 100° Right, 6 Hole		
55-04766	12mm Bar, 100° Left, 6 Hole		
55-04767	12mm Bar, 100° Right, 6 Hole		
1.7mm Standard Plates, Gold			
55-07781	Z Plate, Small Left, 4 Hole		
55-07782	Z Plate, Small Right, 4 Hole		
55-07783	Z Plate, Large Left, 4 Hole		
55-07784	Z Plate, Large Right, 4 Hole		
55-06724	Straight Plate, 24 Hole		
55-05151	Y Plate, 4mm Bar, Standard 5 Hole		
55-05152	Y Plate, 8mm Bar, Standard 5 Hole		

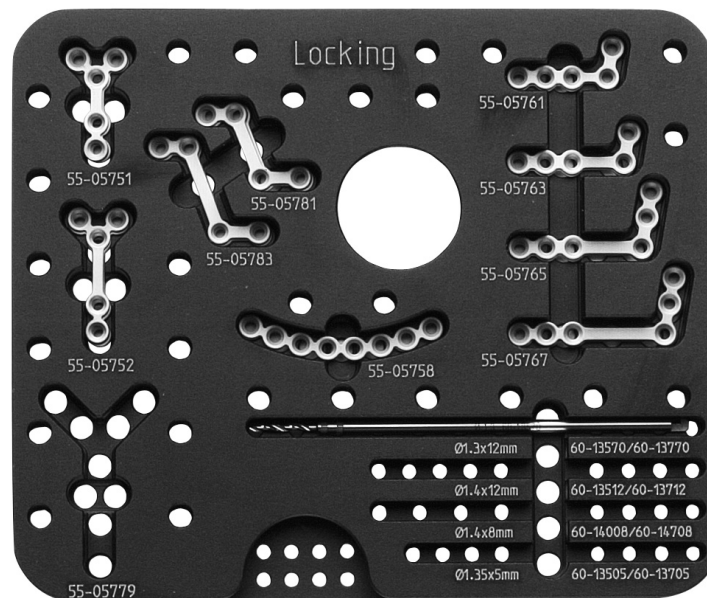
1.7MM LOCKING PLATES, GREY

(Order Qty: Pkg of 1)

Product No.	Description	Qty	Par Level
55-05758	Curved Plate, 8 Hole,		
55-05751	Y Plate, 4mm bar 5 Hole		
55-05752	Y Plate, 8mm bar 5 Hole		
55-05779	Y Plate, 8 Hole		
55-05761	L Plate, 2mm Bar, 5 Hole		
55-05763	L Plate, 5mm Bar, 5 Hole		
55-05765	L Plate, 8mm Bar, 6 Hole		
55-05767	L Plate, 12mm Bar, 6 Hole		
55-05781	Z Plate, Small, 4 Hole		
55-05783	Z Plate, Large, 4 Hole		



Orthognathic Standard Inlay, Half or Full



Orthognathic Locking Inlay

(PLATES NOT ACTUAL SIZE)

