

stryker

# Facial iD<sup>®</sup>

Mandible reconstruction

**Individually  
designed.**

Personalized care.

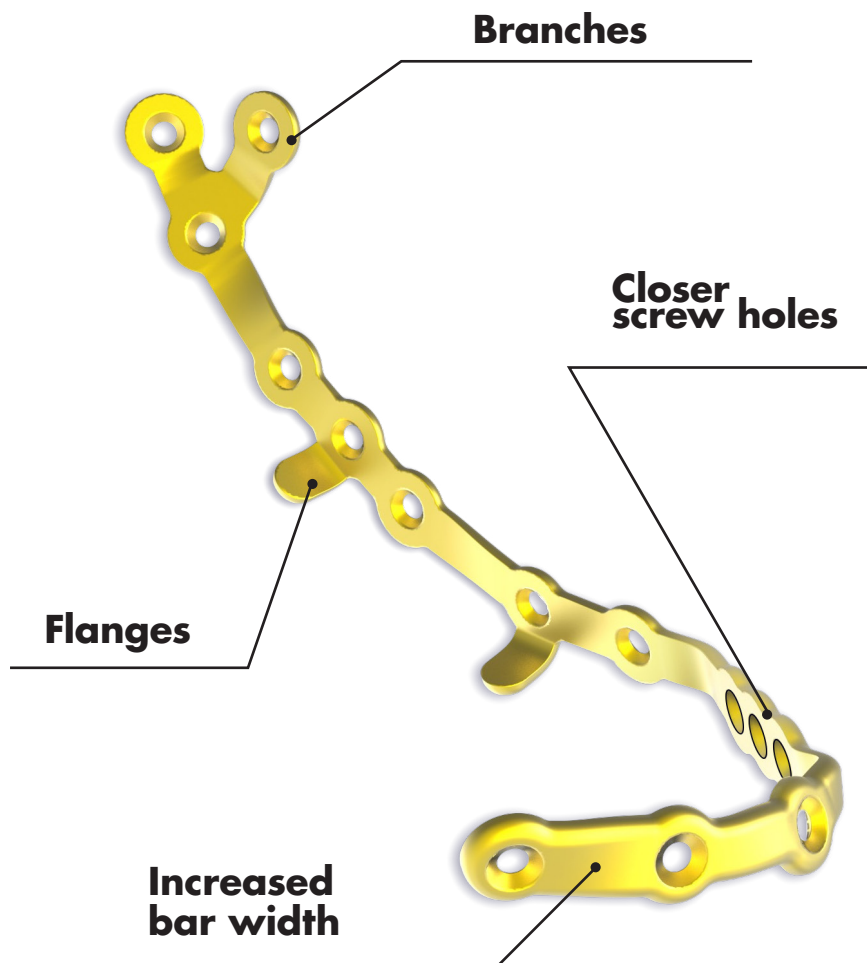


**iD Solutions<sup>®</sup>**

# We're putting the control **in your hands**

Our Facial iD Mandible reconstruction plate can be designed to meet the individual needs of you and your patients. These customized plates are manufactured to the planned patient outcome, eliminating the time needed for intra-operative adaptation. In collaboration with 3D Systems, VSP® can be used to further enhance your patient outcomes.

**New**





## The value of true **customization**

**Our latest Facial iD Mandible Reconstruction plate offers enhancements that will give you the ability to control additional customization for the unique anatomy of your patient.**



### **Branches**

Ability to extend the plate in multiple directions



### **Flanges**

Allows for anatomical positioning on your patient's bony anatomy



### **Closer screw holes**

With our latest Facial iD mandible reconstruction plate, screw holes can be placed 3mm closer together

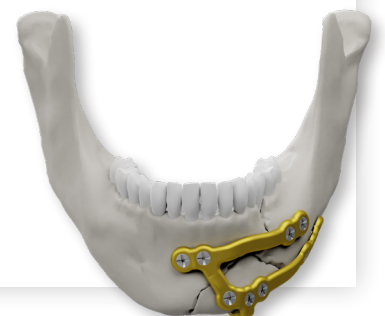


### **Increased bar width**

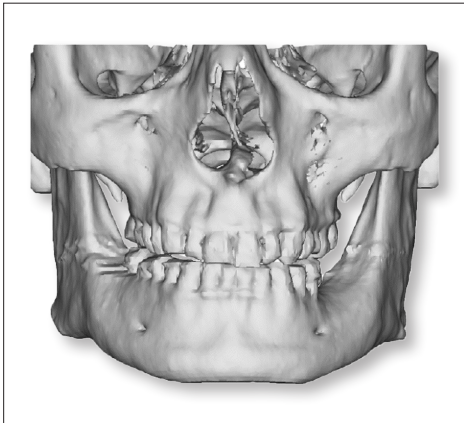
Width can be increased to 7.5mm for additional design flexibility

### **Trauma indication**

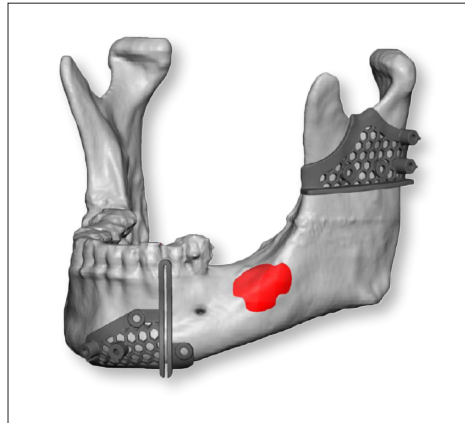
Our new Facial iD Mandible Reconstruction plate offers a new Mandible trauma indication



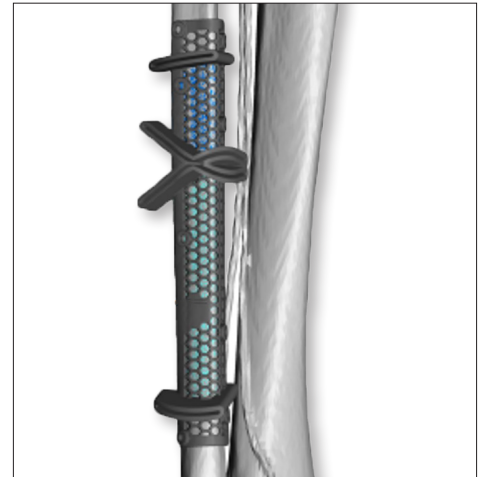
Together with  
3D Systems we offer  
**VSP®**



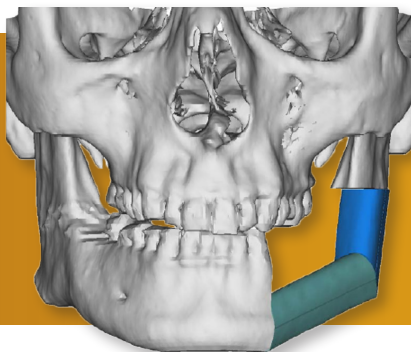
**Pre-operative  
patient anatomy**



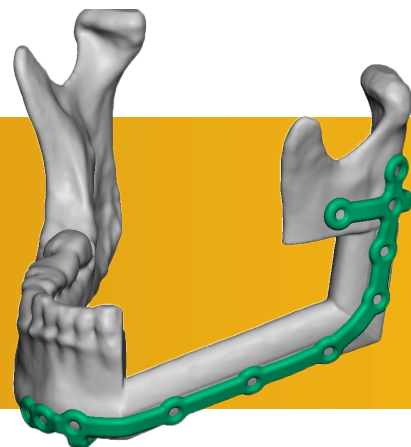
**Mandible cutting  
guides**



**Fibula cutting guides**

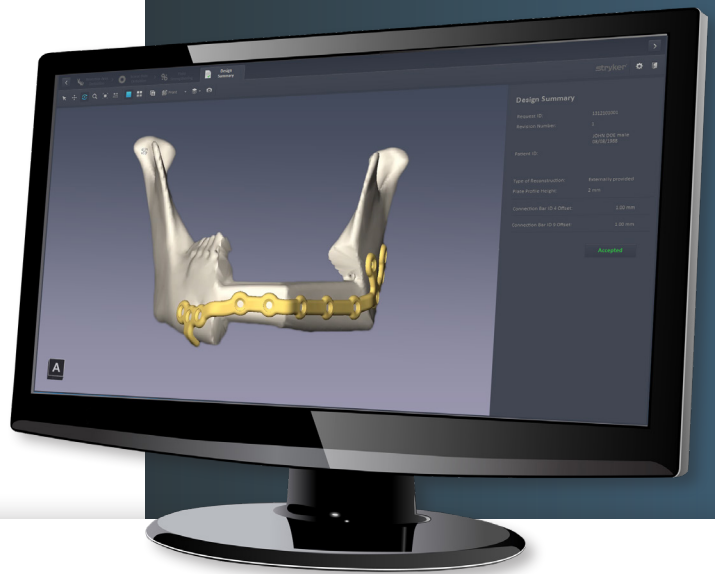


**Post-operative anatomy**



**Post-operative mandible with our  
Customized Mandible Recon Plate**

# Plates designed to fit your patient



## Patient-specific design derived from patient CT data

Our iD Solutions team creates a virtual reconstruction and an individual plate design with your optional online participation. Plate design is based upon a CT scan of your patient.

## Personalized design session

During a design session, you can interface with a design engineer to select specific plate features such as profile height, length and run of the plate, number of screw holes and individual bar strengthening.

## Customizable design features

By selecting specific plate design features like profile height, length and run of the plate you can create patient-specific solutions. Specific screw hole positions are defined individually to avoid screw interference with nerves, tooth roots, osteotomies and existing or future implants.

## Customized strength optimization

Plate profile heights of 2.0mm and 2.8mm combined with increased individual bar widths may improve the fatigue strength by approximately 40% compared to standard universal reconstruction plates.<sup>1</sup>

## Primary mandible reconstruction (2.0mm)



78-31020  
full



78-30020  
hemi

## Secondary mandible reconstruction (2.8mm)



78-31028  
full



78-30028  
hemi

## Craniomaxillofacial

### References

1. Dynamic Testing. Reports available at Stryker Leibinger GmbH & Co. KG.

This document is intended solely for the use of healthcare professionals. A surgeon must always rely on his or her own professional clinical judgment when deciding whether to use a particular product when treating a particular patient. Stryker does not dispense medical advice and recommends that surgeons be trained in the use of any particular product before using it in surgery.

The information presented is intended to demonstrate a Stryker product. A surgeon must always refer to the package insert, product label and/or instructions for use, including the instructions for cleaning and sterilization (if applicable), before using any Stryker product. Products may not be available in all markets because product availability is subject to the regulatory and/or medical practices in individual markets.

Please contact your Stryker representative if you have questions about the availability of Stryker products in your area. Stryker Corporation or its divisions or other corporate affiliated entities own, use or have applied for the following trademarks or service marks: Facial iD, iD Solutions, Stryker. All other trademarks are trademarks of their respective owners or holders.

VSP is a registered trademark of 3D Systems, Inc.

CRAN-638894\_REV-0

Copyright © 2023 Stryker  
Printed in USA

**Guides Distributed By:**  
Stryker Craniomaxillofacial  
Kalamazoo, MI 49002 USA  
t: 269 389 5346, f: 877 648 7114  
toll free: 800 962 6558  
stryker.com/cmf

**Facial iD Plates Manufactured By:**  
Stryker Craniomaxillofacial  
Kalamazoo, MI 49002 USA  
t: 269 389 5346, f: 877 648 7114  
toll free: 800 962 6558  
stryker.com/cmf

**Guides Manufactured By:**  
3D Systems  
5381 South Alkire Circle  
Littleton, Colorado 80127 USA  
t: +1 844.643.1001 (toll-free US/Canada)  
t: +1 720.643.1001  
f: +1 720.643.1009  
www.3dsystems.com/healthcare  
vsp@3dsystems.com

MM-1008 Rev A