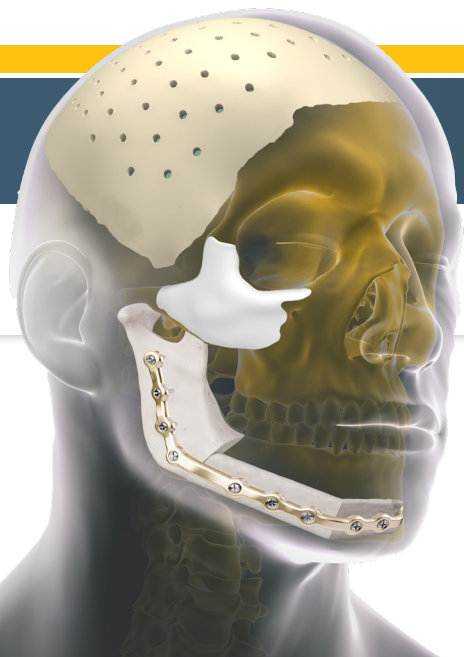


# Patient-specific

## product workflows



A surgeon must always rely on his or her own professional clinical judgment when deciding whether to use a particular product when treating a particular patient. Stryker does not dispense medical advice and recommends that surgeons be trained in the use of any particular product before using it in surgery.

The information presented is intended to demonstrate the breadth of Stryker product offerings. A surgeon must always refer to the package insert, product label and/or instructions for use before using any Stryker product. Products may not be available in all markets because product availability is subject to the regulatory and/or medical practices in individual markets. Please contact your Stryker representative if you have questions about the availability of Stryker products in your area.

# 3D Systems

VSP and Anatomical Models  
without patient-specific implants

## Applications:

- Orthognathics
- Reconstruction
- Cranial
- Distraction
- Microtia

### 1. CT/CBCT data

Upload to [www.3dsystems.com/medicaldata](http://www.3dsystems.com/medicaldata)

### 2. Occlusal records\*

Stone models or intraoral scans

Upload digital files with CT/CBCT data or mail physical models to:

3D Systems  
5381 South Alkire Circle  
Littleton, CO 80127

### 3. Optional digital clinical photos†

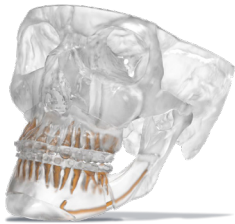
Upload digital files with CT/CBCT data

### 4. Planning Session (Web Meeting)

3D Systems representative will reach out to schedule

\*Only required for orthognathic and Jaw in a Day® cases

† Clinical photos are typically only used for orthognathic cases



# Stryker

PEEK, MEDPOR and PMMA

## Applications:

- Cranial and craniofacial reconstruction
- Cranial and craniofacial augmentation\*
- Mandible augmentation\*
- Orbital

### 1. CT/CBCT data

Upload to [www.fit.stryker.com](http://www.fit.stryker.com)

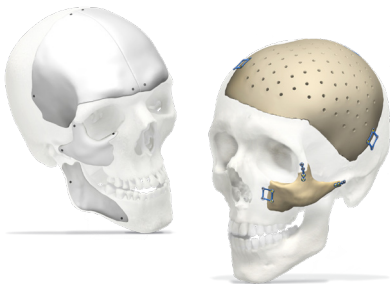
### 2. Planning session

Available as needed or requested. Ability to schedule directly through Stryker Ordering app

### 3. Surgeon approval

Required on all implants excluding Priority ("Approval by use" in effect)

\* MEDPOR only



# Stryker and 3D Systems

Facial iD plating (including CMRP) with VSP

## Applications:

- Midface/mandible reconstruction and trauma
- Orthognathics

### 1. CT/CBCT data

Upload to [www.fit.stryker.com](http://www.fit.stryker.com)

### 2. Occlusal records\*

Stone models or intraoral scans

Upload digital files with CT/CBCT data or mail physical models to:

3D Systems  
5381 South Alkire Circle  
Littleton, CO 80127

### 3. Optional digital clinical photos†

Upload digital files with CT/CBCT data

### 4. Planning Session (Web Meeting)

3D Systems representative will reach out to schedule

\*Only required for orthognathic and Jaw in a Day® cases

† Clinical photos are typically only used for orthognathic cases

