

Facial **iD**[®] Orbital

Patient-specific orbital
reconstruction implant

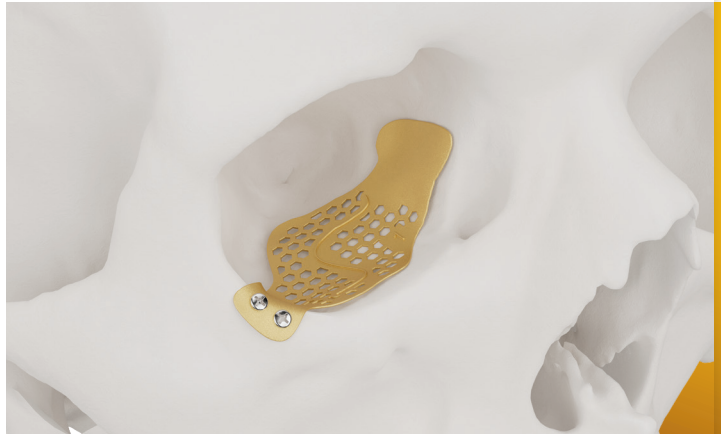
**Envision
more**



Your vision. Our precision.

Broad applicability

- ✓ Patients 12 years and up¹
- ✓ Nonsymmetrical cases (trauma, panfacial defects, dual-orbit damage) or any case per surgeon discretion¹
- ✓ Implant design incorporates normative anatomical data; is not limited to mirroring data



Stryker's exclusive orbital statistical shape modeling

Facial iD Orbital implants save OR time vs stock²

Facial iD Orbital implants can provide a more accurate fit vs stock³

SSM provides an accurate reconstruction surface for orbital repair⁴

SSM utilizes 100+ CT scans of males and females ages 15 to 99 from a variety of ethnicities to provide a normative orbital model as a foundation for implant design⁴

“When using Facial iD Orbital, I feel much more confident about the anatomy, the repair, and that the orbital volume and eye position will be correct.”

– Oral and Maxillofacial surgeon⁵

“Facial iD Orbital allows me to reconstruct complex traumatic and maxillectomy defects with a degree of efficiency and accuracy that is difficult to achieve with stock implants”

– ENT surgeon⁵

Confidence in sight

By combining patient-specific implant options, statistical shape model (SSM) software and 3D printing, we utilize innovative technology to create the natural fit, function and aesthetics you want in a customized orbital implant. SSM utilizes normative data that integrates seamlessly with the patient's anatomy, giving you confidence in your implant design and fit. And, since implants are designed preoperatively with you, you'll have predictable intraoperative performance you can rely on.

Performance and outcome

- Patient-specific design increases accuracy over stock implants³
- Matches pre-op surgical plan; fits and functions as expected
- Supports patient-centric standard of care

Efficiency and ease of use

- Simplifies pre-op planning beyond mirroring
- Enhances surgeon control over implant design
- Little-to-no intra-op modification/bending, since the implant is patient-specific, which can lead to reduced time in the O.R. and under anesthesia
- Enhances visualization and accommodation of critical anatomy
- Streamlines intra-op workflow

Navigational markers and lines work with Q Guidance, Nav3i, Scopis or your preferred navigation system

Solid, mesh or hybrid designs to accommodate drainage, scar tissue etc

Personalized design made of 3D printed, commercially pure titanium

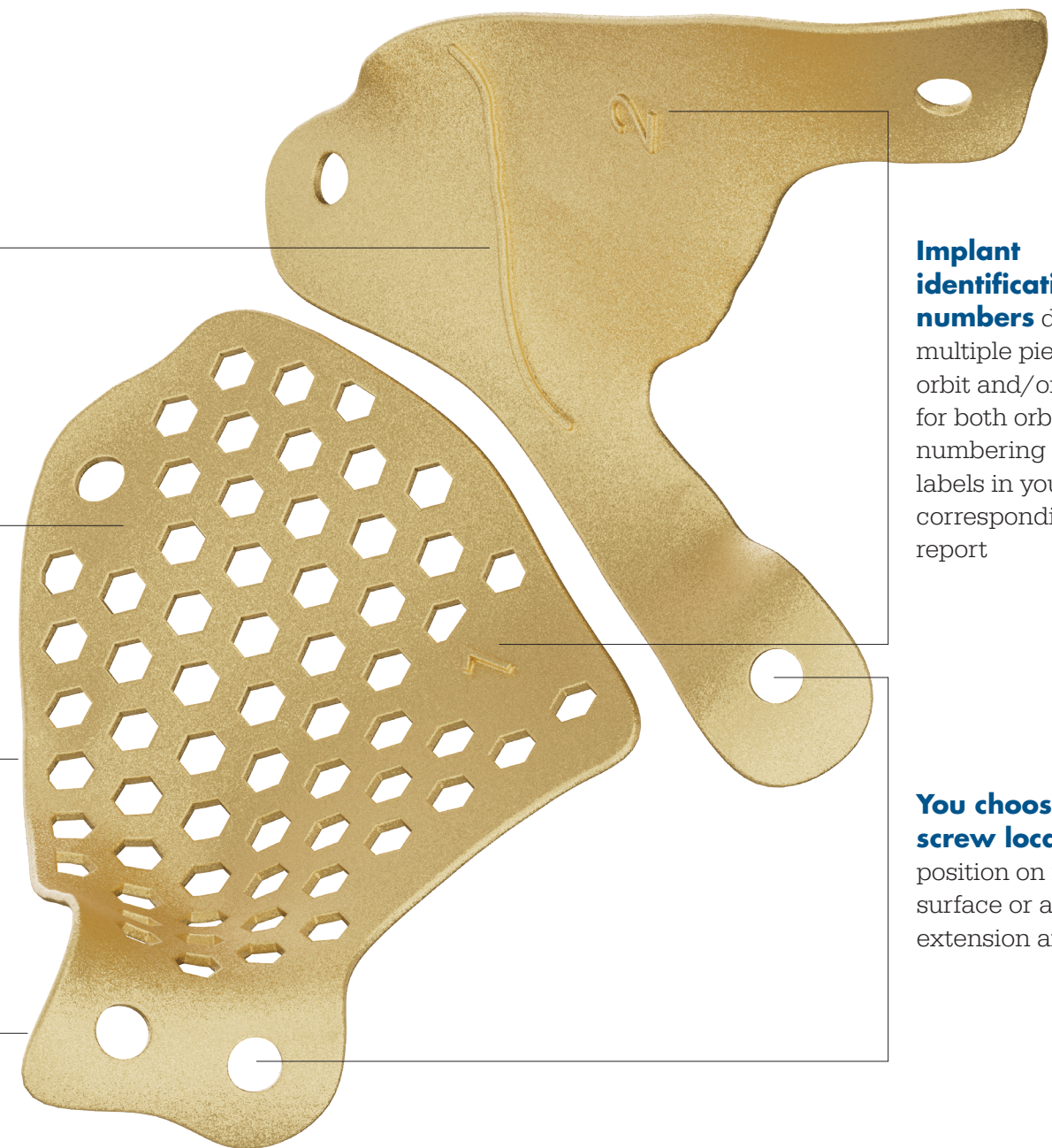
Multiple thicknesses supported (0.3mm, 0.6mm, 0.9mm)

Implant identification numbers denote multiple pieces per orbit and/or pieces for both orbits; numbering matches labels in your corresponding case report

You choose screw location; position on implant surface or as extension arm



You choose screw size; customize screw holes for either 1.2mm or 1.7mm screws with AXS technology

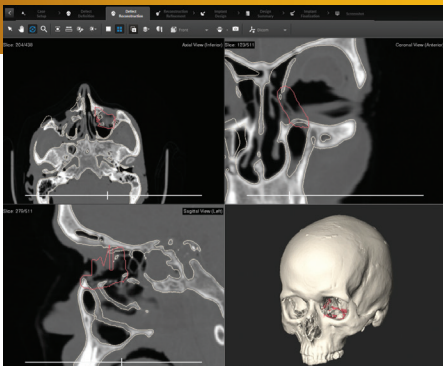


Surgeon driven design

statistical shape model (SSM)

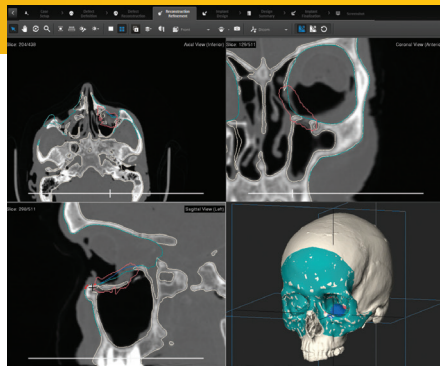
Critically useful in nonsymmetrical cases, our design software incorporates our proprietary orbital statistical shape model (SSM), which amplifies your design by integrating normative data with your patient's native anatomy. Just as importantly, your online interactive design session with our design engineer is short and simple.

1



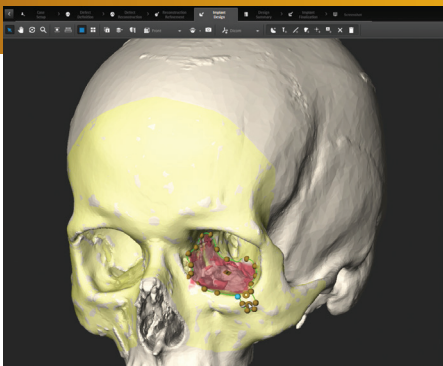
▲ Using uploaded patient CTs, you and your design engineer select defect(s) for reconstruction.

2



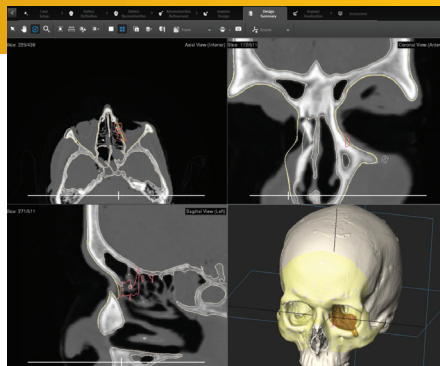
▲ Then, improve the anatomy via orbital SSM technology which blends your patient's healthy anatomy with normative population data to create a perfected, idealized surface for implant design. Our SSM algorithm knows where to place the perfected surface based on the defect(s) marked in the software by you and your design engineer.

3



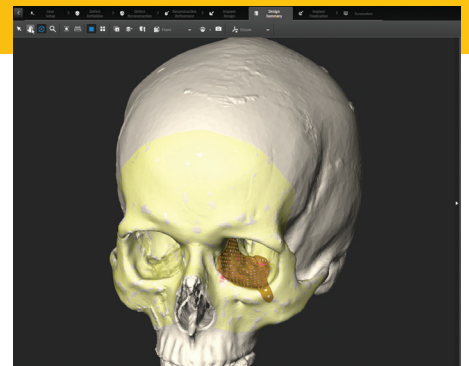
▲ Continue tailoring implant design precisely to your liking, including screw hole locations, implant thickness and implant surface (solid, mesh, hybrid) to suit patient needs and avoid vital anatomical structures.

4



▲ Visualize the defect, implant design and plan prior to 3D printing; modify collaboratively with your design engineer.

5



▲ View and approve the final implant design in real time during your planning session.

When trauma strikes, Stryker has you covered

In traumatic situations, your patients' reliance on you is next to none. You not only restore life-saving function, but also life-changing aesthetics that are at the very core of your patients' personality, confidence and quality of life. That's why we provide a full suite of patient-specific trauma solutions so you have the tools and technology needed to make a world of difference for your patients.



**Facial iD
Orbital**

**Facial iD 3D-printed
patient-specific plating**

**PEEK customized
implants**

1. Refer to the IFU for use of this device
2. Due to less intraoperative bending; Data on file at Stryker
3. Due to patient-specific nature and design to patient CT; Data on file at Stryker
4. Data on file at Stryker
5. Surgeons are paid-consultants of Stryker. The opinions expressed by the surgeon are those of the surgeon and not necessarily those of Stryker. Individual experiences may vary. Consent on file at Stryker.

Craniomaxillofacial

This document is intended solely for the use of healthcare professionals. A surgeon must always rely on his or her own professional clinical judgment when deciding whether to use a particular product when treating a particular patient. Stryker does not dispense medical advice and recommends that surgeons be trained in the use of any particular product before using it in surgery. The information presented is intended to demonstrate a Stryker product. A surgeon must always refer to the package insert, product label and/or instructions for use, including the instructions for cleaning and sterilization (if applicable), before using any Stryker product. Products may not be available in all markets because product availability is subject to the regulatory and/or medical practices in individual markets. Please contact your Stryker representative if you have questions about the availability of Stryker products in your area. Stryker or its affiliated entities own, use, or have applied for the following trademarks or service marks: Facial ID and Stryker. All other trademarks are trademarks of their respective owners or holders.

Stryker
1941 Stryker Way
Portage, MI 49002 USA
t: 269 389 5346 f: 800 962 6558
toll free: 877 648 7114
cmf.stryker.com