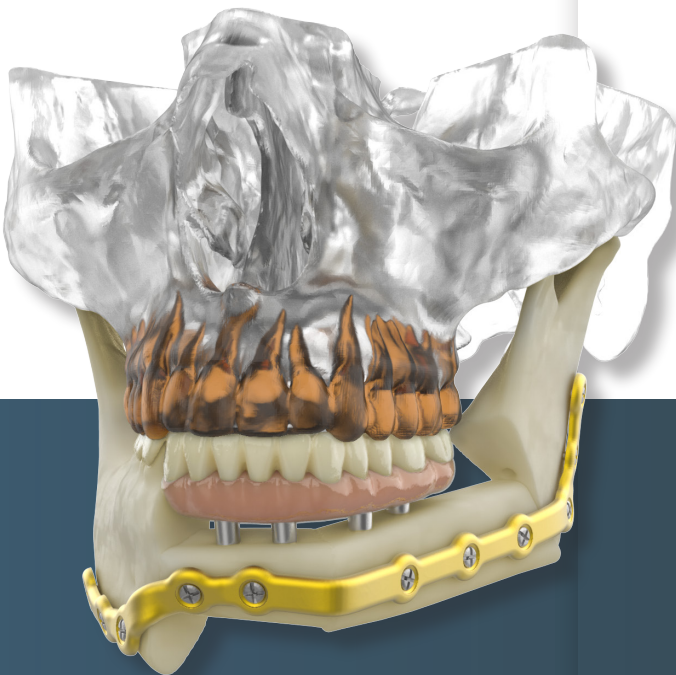


# VSP<sup>®</sup> Reconstruction

with immediate  
dental prosthesis

Expanding the capabilities of  
single stage jaw restoration  
using VSP Reconstruction



## Craniomaxillofacial

A surgeon must always rely on his or her own professional clinical judgment when deciding whether to use a particular product when treating a particular patient. Stryker does not dispense medical advice and recommends that surgeons be trained in the use of any particular product before using it in surgery.

The information presented is intended to demonstrate the breadth of Stryker product offerings. A surgeon must always refer to the package insert, product label and/or instructions for use before using any Stryker product. Products may not be available in all markets because product availability is subject to the regulatory and/or medical practices in individual markets. Please contact your Stryker representative if you have questions about the availability of Stryker products in your area.

Literature number: 3DS-BR-36\_Rev. 1\_34194

Copyright © 2022 Stryker  
Printed in USA

Distributed by:

Craniomaxillofacial  
Kalamazoo, MI 49002 USA  
t: 269 389 5346, f: 877 648 7114  
toll free: 800 962 6558

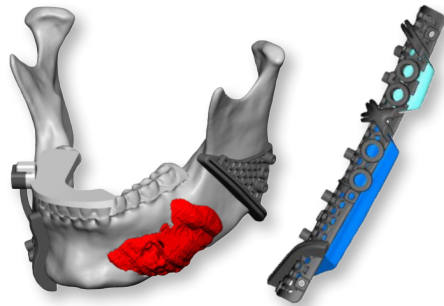
[stryker.com/cmfi](http://stryker.com/cmfi)

3D Systems  
5381 South Alkire Circle  
Littleton, Colorado 80127 USA  
t: +1 844.643.1001 (toll-free US/Canada)  
t: +1 720.643.1001  
f: +1 720.643.1009  
[www.3dsystems.com/healthcare](http://www.3dsystems.com/healthcare)  
[vsp@3dsystems.com](mailto:vsp@3dsystems.com)

**Trusted**  
since the  
beginning

Our VSP® Reconstruction product line allows for immediate placement of a provisional dental prosthesis during a single-stage free tissue transfer jaw reconstruction surgery.

The surgical planning along with guide and prosthesis designs are completed using state-of-the-art CAD/CAM technology, allowing the patient to emerge after a single surgery with a full jaw reconstruction, including dental rehabilitation.



The full suite of **VSP Reconstruction guide** options are available. The fibula guide includes features for immediate dental implant placement and predictive holes for the patient-specific plate, creating a cohesive solution.

Reconstruction  
guides



Our **Facial iD Reconstruction plates** are designed virtually to optimize screw hole position and provide a fully customized solution in surgery.

Reconstruction  
plates

**New**



Additionally, a provisional **dental prosthesis** can be provided faster than ever before and included as part of the VSP offering.

Dental prosthesis

## Related articles

Allen, Robert J. Jr M.D.; Nelson, Jonas A. M.D.; Polanco, Thais O. M.D.; Shamsunder, Meghana G. M.P.H.; Ganly, Ian M.D.; Boyle, Jay M.D.; Rosen, Evan D.M.D., M.P.H.; Matros, Evan M.D., M.M.Sc., M.P.H.. Short-Term Outcomes following Virtual Surgery-Assisted Immediate Dental Implant Placement in Free Fibula Flaps for Oncologic Mandibular Reconstruction. *Plastic and Reconstructive Surgery*: December 2020 - Volume 146 - Issue 6 - p 768e-776e doi: 10.1097/PRS.00000000000007352

Runyan, Christopher M. MD, PhD; Sharma, Vishal MD; Staffenberg, David A. MD; Levine, Jamie P MD; Brecht, Lawrence E. DDS; Wexler, Leonard H. MD; Hirsch, David L. MD, DDS. Jaw in a Day: State of the Art in Maxillary Reconstruction. *Journal of Craniofacial Surgery*: November 2016 - Volume 27 - Issue 8 - p 2101-2104 doi: 10.1097/SCS.00000000000003139

Ong A, Williams F, Tokarz E, Shokri T, Hammer D, Ducic Y. Jaw in a Day: Immediate Dental Rehabilitation during Fibula Reconstruction of the Mandible. *Facial Plastic Surgery*. 2021;37(06):722-727. doi:10.1055/s-0041-1732478

Mohammed Qaisi, Harold Kolodney, Gary Swedenburg, Ravi Chandran, Ronald Caloss, Fibula Jaw in a Day: State of the Art in Maxillofacial Reconstruction, *Journal of Oral and Maxillofacial Surgery*, Volume 74, Issue 6, 2016, Pages 1284.e1-1284.e15, ISSN 0278-2391, <https://doi.org/10.1016/j.joms.2016.01.047>.