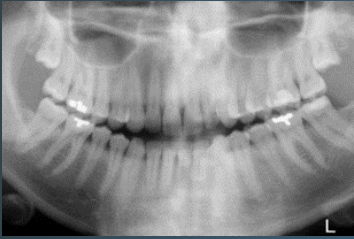


# Skeletal Anchorage

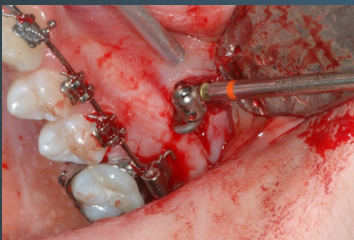


**Orthognathic**  
Anchorage  
System

1



2



3



4



5



# Procedural step-by-step

- Exact location and angle of each anchorage device is determined by orthodontic treatment plan, preoperative clinical examination, and review of panoramic radiograph
- Under anesthesia, a vertical incision is created within the maxillary or mandibular vestibule at the area of planned placement to the mucogingival junction
- An appropriately sized anchor is selected, contoured to the shape of the maxilla or mandible, and secured using monocortical screws. Ensure the bar is close to the bone surface beneath the mucogingival junction
- It is recommended to load orthodontic treatment 10-14 days postoperation. **Note:** Early activation can lead to postoperative loosening and/or failure of the fixture
- Closure of the incision is then carried out using resorbable sutures. **Note:** device should be positioned so that connect bar exits at mucogingival junction

	Part #	Description
Instruments	62-18330	In-situ plate cutter
Screwdrivers	62-12170	Screwdriver blade
	62-20285	Screwdriver handle
	92-12170	Screwdriver blade for tension sheath/plier
	92-12175	Tension sheath
	92-12176	Grasping plier
Twist drills	60-13506	1.35 x 50mm, 6mm working length, Stryker end
	60-13512	1.4 x 54mm, 12mm working length, Stryker end
Locking activation tool	62-00606	Locking activation tool
Implant module	29-00060	Implant module
Self-tapping anchor screw	51-17106	1.7 x 6mm
	51-17108	1.7 x 8mm
	51-17112	1.7 x 12mm
	92-51106	1.7 x 6mm(small head)
	92-51108	1.7 x 8mm(small head)
	92-51112	1.7 x 12mm(small head)
Self-drilling anchor screw	51-17195	1.7 x 5mm
	92-51195	1.7 x 5mm(small head)
Self-tapping fixation screw	50-17004	1.7 x 4mm
	50-17005	1.7 x 5mm
	50-17006	1.7 x 6mm



	Part #	Description
Self-drilling fixation screw	50-17904	1.7 x 4mm
	50-17905	1.7 x 5mm
	50-17906	1.7 x 6mm
Emergency screw	50-19003	1.9 x 3mm
	92-55060	Straight, 6mm
Anchor plate, standard	55-06160	Straight, 9mm
	55-06161	Straight, 11mm
	92-55062	T-shape, 6mm
	55-06162	T-shape, 9mm
	55-06163	T-shape, 11mm
	92-55160	Straight, 6mm
Anchor plate, locking	55-05160	Straight, 9mm
	55-05161	Straight, 11mm
	92-55162	T-shape, 6mm
	55-05162	T-shape, 9mm
	55-05163	T-shape, 11mm

## Activation tool

This unique technology allows you to secure orthodontic appliances/accessories in the guide holes. The head on the locking anchor plate provides exceptional versatility and control throughout the treatment plan. You may also tighten/modify accessories with the turn of the activation tool so that accessories can be removed or redirected with ease.



## Craniomaxillofacial

A surgeon must always rely on his or her own professional clinical judgment when deciding whether to use a particular product when treating a particular patient. Stryker does not dispense medical advice and recommends that surgeons be trained in the use of any particular product before using it in surgery.

The information presented is intended to demonstrate the breadth of Stryker product offerings. A surgeon must always refer to the package insert, product label and/or instructions for use before using any Stryker product. Products may not be available in all markets because product availability is subject to the regulatory and/or medical practices in individual markets. Please contact your Stryker representative if you have questions about the availability of Stryker products in your area.

Stryker Corporation or its divisions or other corporate affiliated entities own, use or have applied for the following trademarks or service marks: Stryker. All other trademarks are trademarks of their respective owners or holders. .

Stryker Craniomaxillofacial  
Kalamazoo, MI 49002 USA  
t: 269 389 5346  
toll free: 800 962 6558  
f: 877 648 7114

**[stryker.com/cm](http://stryker.com/cm)**

MAX-BR-26\_Rev. 1 34081  
Copyright © 2018 Stryker